

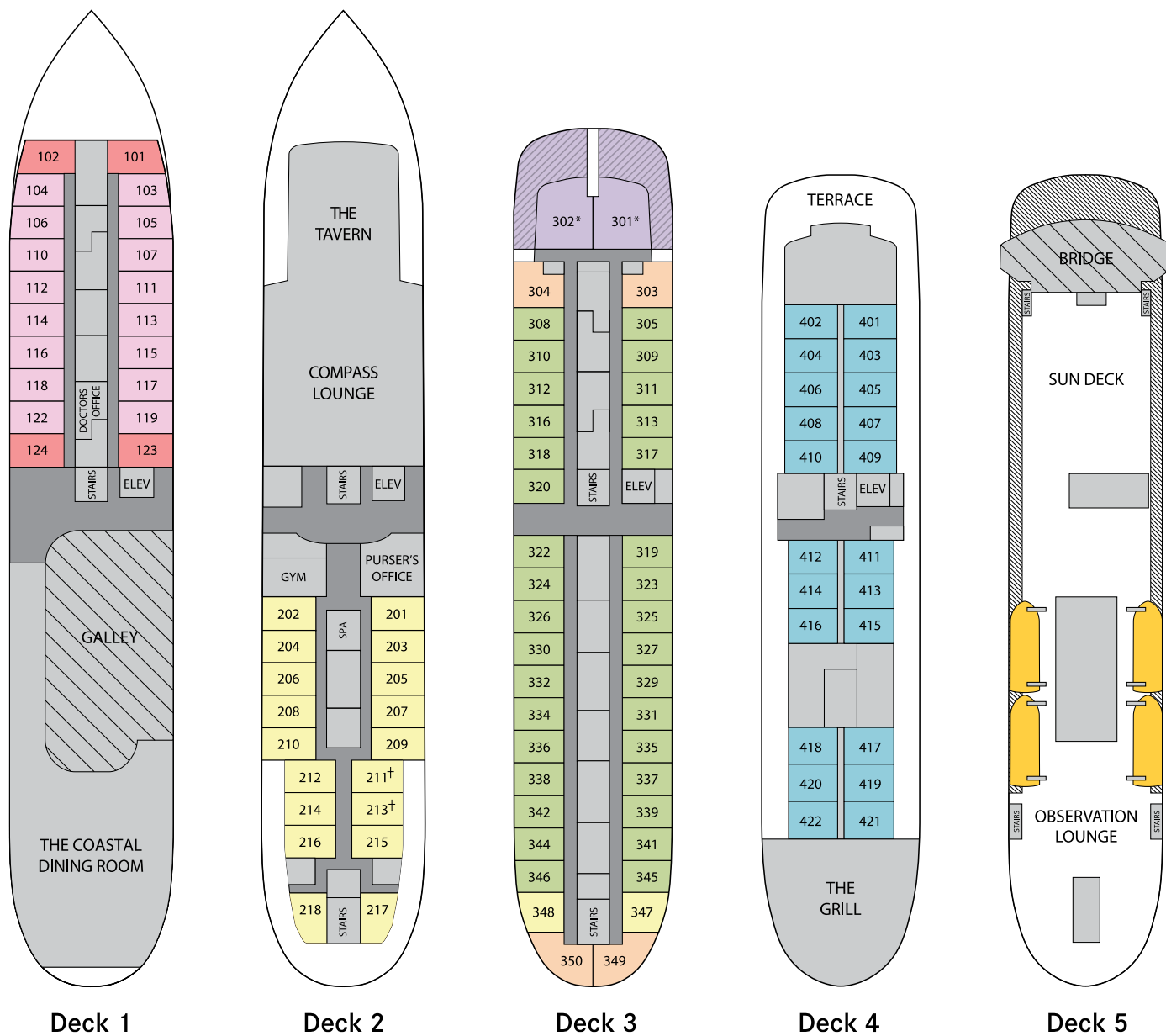


VICTORY®
CRUISE LINES

Owned and Operated by American Queen Steamboat Company

2020 Deck Plans

M/V Victory I and M/V Victory II



CATEGORIES

E **D** **C** **B** **A** **AA** **OS**

† Connecting Rooms * Triple Accommodation

SPECIFICATIONS

Year Built/Refurbished: 2001/2019 **Length:** 286 ft. **Passenger Decks:** 5
Suites and Staterooms: 101 **Passengers:** 202 **Crew:** 84
Registry: Nassau, Bahamas

Suites and Staterooms

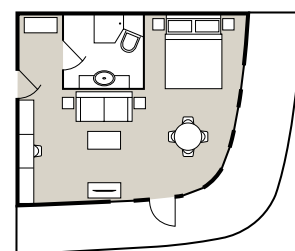
The *M/V Victory I* and *M/V Victory II* are skillfully designed to allow you to relax and unwind as you discover the world's most remarkable coastal regions. Enjoy quiet time in a cozy corner. Stretch your legs on the Promenade Deck, or gather with friends as you watch the world go by. No matter where you are, you'll find perfectly designed spaces for every mood and every possibility. All rooms include a full bathroom with shower, an armoire and a chest of drawers, a flat-screen TV and a safe, for your comfort and convenience.

OWNER'S SUITE OS



This ocean-view suite boasts sweeping views, interior and exterior entrances, a semi-private terrace, one queen bed and one sofa-bed, a sitting area, a complimentary mini bar (restocked daily), an in-room safe, evening canapés, complimentary laundry service and fresh fruit daily.

- 335 sq. ft.
- Semi-private terrace
- Queen bed
- Mini refrigerator
- Interior and exterior entrances
- Triple accommodation
- Furnished sitting area with a sofa-bed and dining table
- Deck 3

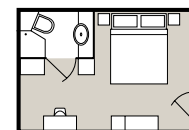


CATEGORY AA



Enjoy an ocean view with direct access to the open-air Promenade Deck and outdoor seating.

- 161 sq. ft.
- Direct access to the open-air Promenade Deck
- Queen bed or two single beds
- Mini refrigerator
- Writing desk
- Deck 4

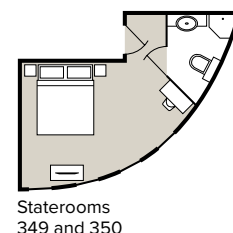
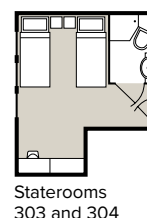


CATEGORY A



This spacious ocean-view stateroom offers three windows from which to take in the ever-changing landscape.

- 185 sq. ft.
- Queen bed or two single beds
- Writing desk
- Deck 3



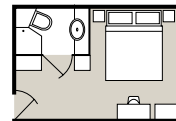
Note: Stateroom information provided is a general representation of the stateroom categories. Actual stateroom sizes, configurations, features and amenities may vary slightly among and within stateroom categories.

CATEGORY B



This ocean-view stateroom provides sweeping panoramic views.

- 146 sq. ft.
- Queen bed or two single beds
- Deck 3
- *Staterooms 320, 322, 345 and 346 have fixed twin beds, and are not convertible into a double or queen bed.*

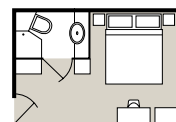


CATEGORY C

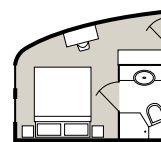


Enjoy your ocean view in this elegant stateroom.

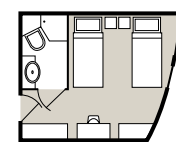
- 152 sq. ft.
- Queen bed or two single beds
- Decks 2 and 3
- Staterooms 211 and 213 are connecting
- *Staterooms 347 and 348 have fixed twin beds, and are not convertible into a double or queen bed.*



Staterooms
201 to 216



Staterooms
217 and 218



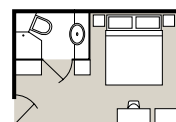
Staterooms
347 and 348

CATEGORY D



This ocean-view stateroom provides the perfect sanctuary.

- 158 sq. ft.
- Queen bed or two single beds
- Deck 1
- *Staterooms 103 and 104 have fixed twin beds, and are not convertible into a double or queen bed.*



CATEGORY E



Relax in the comfort of this ocean-view stateroom.

- 160 sq. ft.
- Queen bed
- Deck 1
- *Staterooms 101 and 102 have fixed queen beds.*

